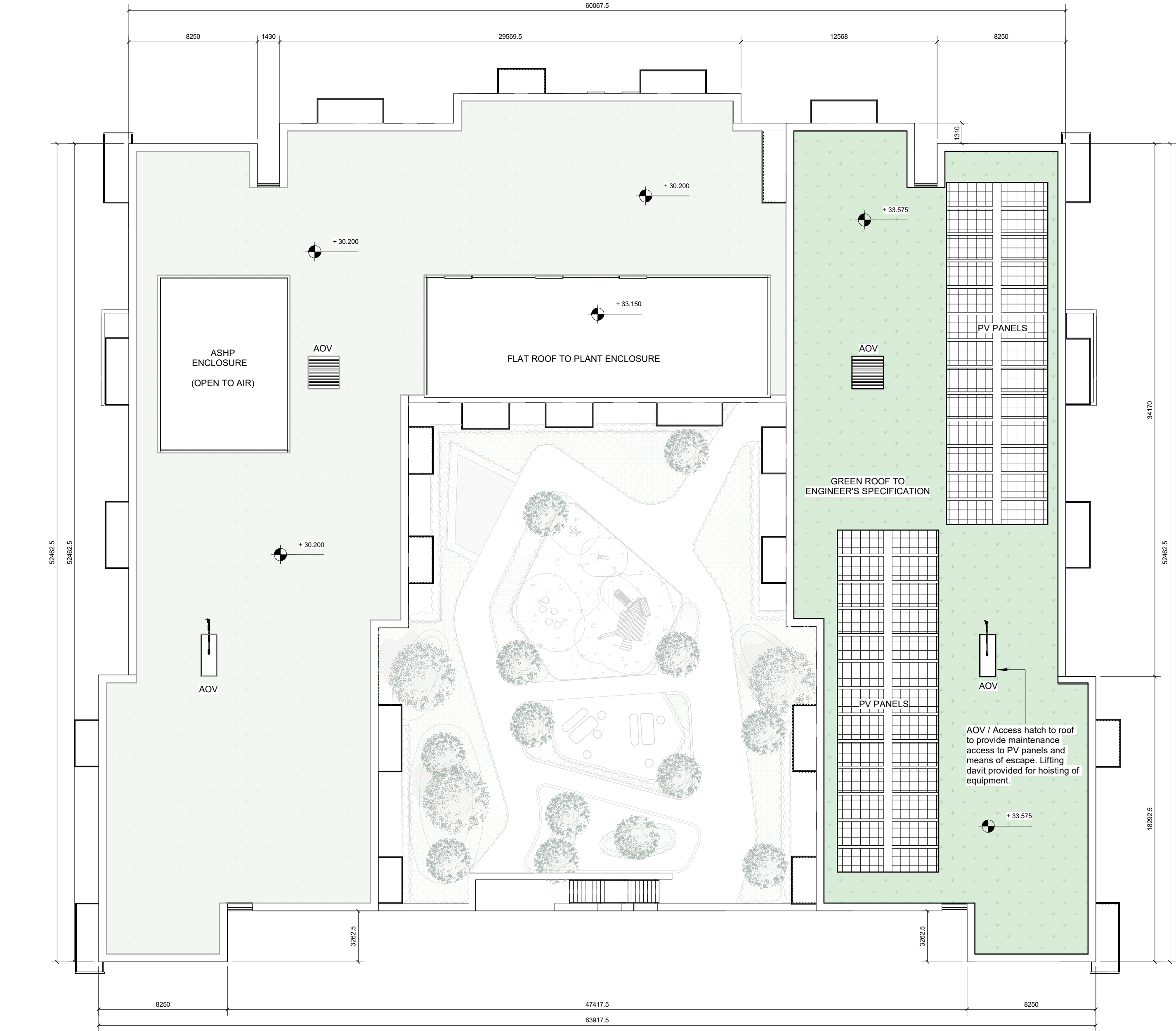


WEST BLOCK



RF - Roof Plan
1 : 200

Notes:

- Do not scale from this drawing. Use figured dimensions in all cases.
- Verify dimensions on site and report any discrepancies to the Architect immediately.
- This drawing to be read in conjunction with the Architect's Specification.
- © This drawing is copyright and may only be reproduced with the Architect's permission.

Drawing Notes:

TOTAL NUMBER OF UNITS: 126
TOTAL DUAL ASPECT UNITS: 72 (57.1%)

- UNIT TYPE LEGEND**
- 1B2P +10%
 - 1B2P S
 - 2B3P +10%
 - 2B3P S
 - 2B4P
 - 2B4P S

- LEGEND**
- BUILDING MAIN ENTRANCE
 - RISER
 - DUAL-ASPECT UNIT



Issues & Revisions				
Rev.	Date	Dwn	Details of Issue / Revision	
P2.1	22.11.2024	AK	UPDATED POST 3328	
P2.2	04.12.2024	AK	REVISED PLANT	
P3	10.01.2025	AK	ISSUED FOR PLANNING	



Douglas Business Centre,
Carrigaline Rd.,
Douglas, Cork,
T12 P0B8
T: + 353 (0)21 436 2922
W: www.reddyarchitecture.com
E: info@reddyarchitecture.com

Client Details:
The Land Development Agency (LDA)

Project Details: LDA Wilton, Sarsfield Road LRD Lands Adjoining the ESB Networks DAC Office, at Farrandahadore More, Sarsfield Road, Wilton Cork City			Drawing Title: West Block - Roof Plan		
Job No. P23-081C	Sheet Size: A1_L	Scale @A1: As indicated	Status P3	Purpose of Issue PLANNING PERMISSION	
Issue Date: AUGUST 2024	Drawn By: AK	Reviewed By: P.Mulligan	Project - System - Spatial Zone - Level - Type - Originator - Role - Number WLT-06-WB-RF-DR-RAU-AR-1204		Revision P3